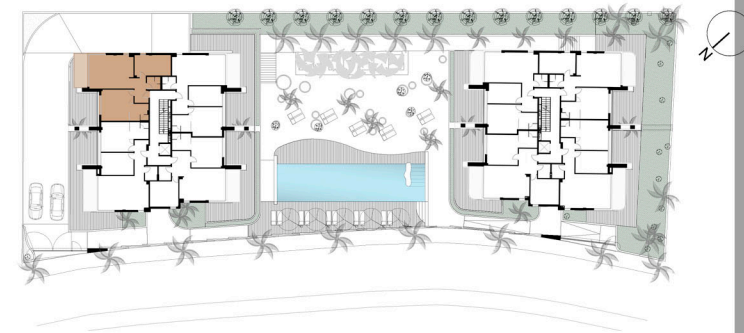




# BUILDING A SECOND FLOOR B



BUILDING A	SECOND FLOOR
	APARTMENT B

LIVING ROOM-KITCHEN	26.72 m2
HALL	5.70 m2
TOILET	3.09 m2
BEDROOM 1	16.82 m2
IN SUITE BATHROOM 1	5.84 m2
BEDROOM 2	13.75 m2

TOTAL OF SURFACE OF USABLE AREA	71.92 m2
---------------------------------	----------

TOTAL OF CONSTRUCTED AREA	82.75 m2
---------------------------	----------

Surface of Communal Area	18.74 m2	
TOTAL OF COSTRUCTED AND COMMUNAL AREA	101.49 m2	(1)
Surface of Terrace-Sun Area	8.39 m2	(2)
Private Garden	00.00 m2	(3)

TOTAL SURFACE OF APARTAMENT (1+2+3)	109.88 m2
-------------------------------------	-----------



DUNES BEACH  
MARBELLA

PROJECT OF 30 APARTMENTS IN CABOPINO  
DEVELOPER: DUNES BEACH INVEST S.L.