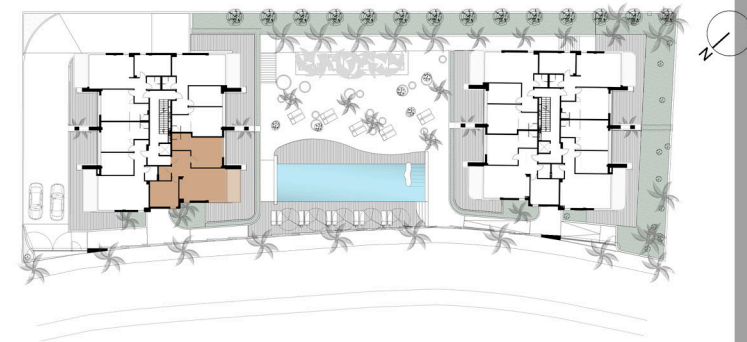




BUILDING A SECOND FLOOR D



BUILDING A	SECOND FLOOR
	APARTMENT D

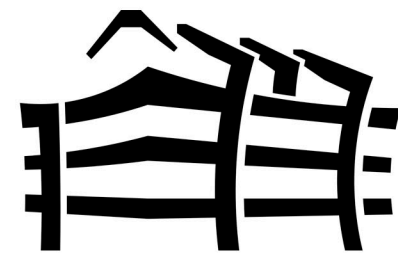
LIVING ROOM-KITCHEN	25.47 m2
HALL	7.48 m2
TOILET	3.13 m2
BEDROOM 1	16.61 m2
IN SUITE BATHROOM 1	5.67 m2
BEDROOM 2	13.50 m2

TOTAL OF SURFACE OF USABLE AREA	71.86 m2
---------------------------------	----------

TOTAL OF CONSTRUCTED AREA	82.40 m2
---------------------------	----------

Surface of Communal Area	18.66 m2	
TOTAL OF COSTRUCTED AND COMMUNAL AREA	101.06 m2	(1)
Surface of Terrace-Sun Area	8.04 m2	(2)
Private Garden	00.00 m2	(3)

TOTAL SURFACE OF APARTAMENT (1+2+3)	109.10 m2
-------------------------------------	-----------



DUNES BEACH
MARBELLA

PROJECT OF 30 APARTMENTS IN CABOPINO
DEVELOPER: DUNES BEACH INVEST S.L.