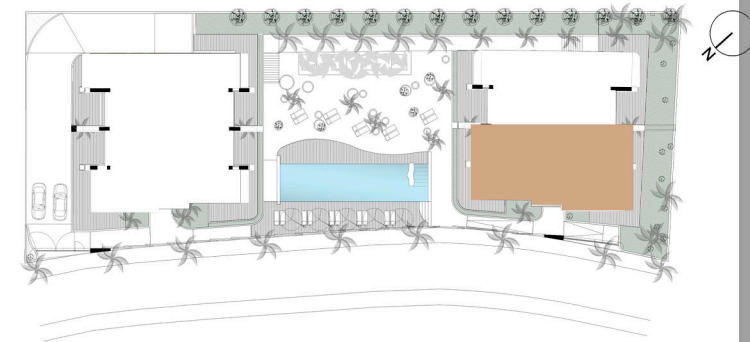




0 1 2 3 4 5

BUILDING B DUPLEX PENTHOUSE A



BUILDING B

DUPLEX
PENTHOUSE
APARTMENT A

LIVING ROOM-KITCHEN	33.73 m2
HALL	5.83 m2
BATHROOM 2	4.46 m2
BEDROOM 1	12.21 m2
IN SUITE BATHROOM 1	4.32 m2
BEDROOM 2	11.00 m2
BEDROOM 3	21.49 m2
IN SUITE BATHROOM 3	9.24 m2

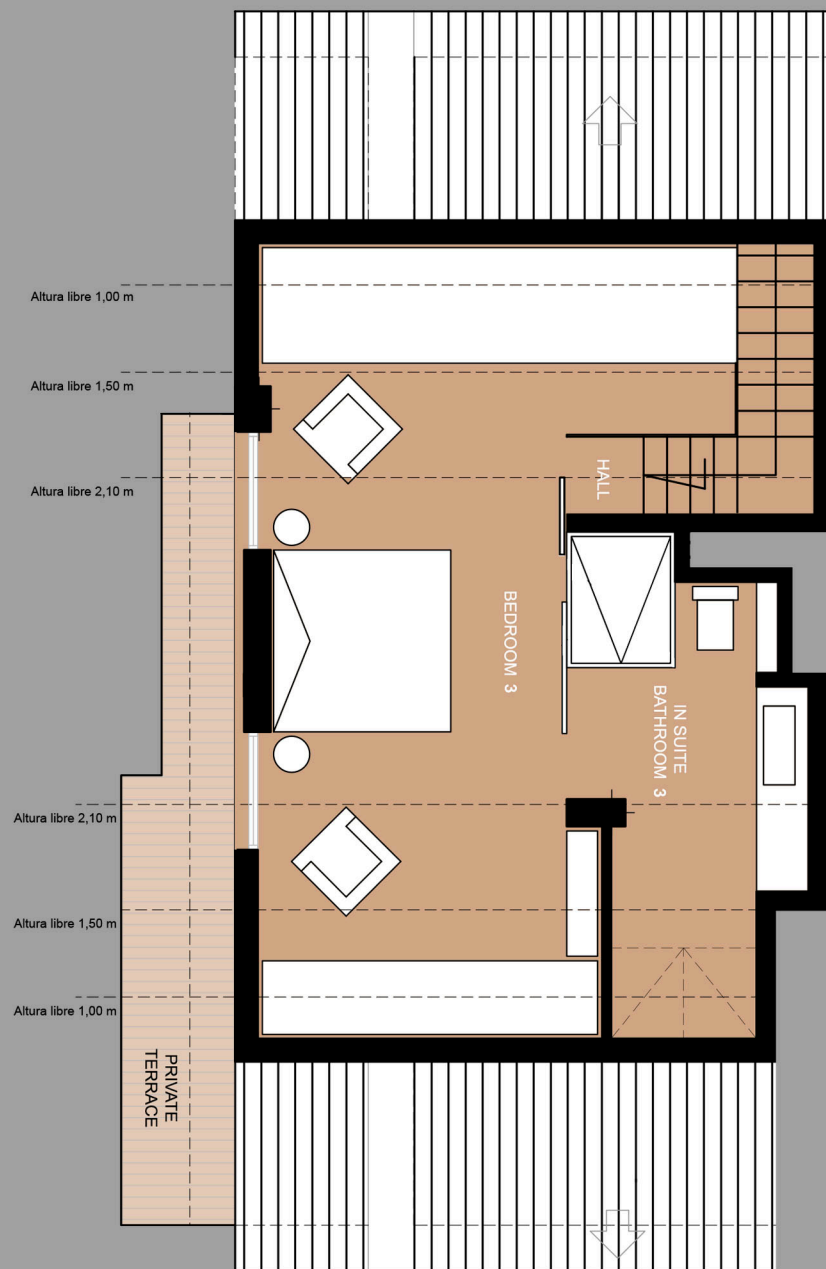
TOTAL OF SURFACE OF USABLE AREA	102.28 m2
TOTAL OF CONSTRUCTED AREA	118.80 m2
Surface of Communal Area	26.33 m2
TOTAL OF COSTRUCTED AND COMMUNAL AREA	145.13 m2 (1)
Surface of Terrace-Sun Area	96.58 m2 (2)
Private Garden	00.00 m2 (3)

TOTAL SURFACE OF APARTAMENT (1+2+3)	241.71 m2
--	------------------

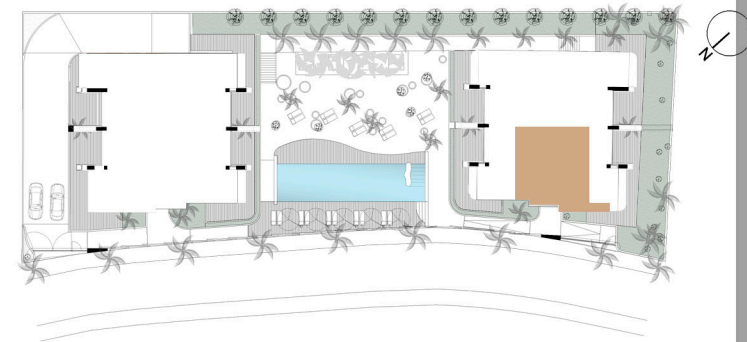


DUNES BEACH
MARBELLA

PROJECT OF 30 APARTMENTS IN CABOPINO
DEVELOPER: DUNES BEACH INVEST S.L.



BUILDING B DUPLEX PENTHOUSE A



BUILDING B

DUPLEX
PENTHOUSE
APARTMENT A

LIVING ROOM-KITCHEN	33.73 m2
HALL	5.83 m2
BATHROOM 2	4.46 m2
BEDROOM 1	12.21 m2
IN SUITE BATHROOM 1	4.32 m2
BEDROOM 2	11.00 m2
BEDROOM 3	21.49 m2
IN SUITE BATHROOM 3	9.24 m2

TOTAL OF SURFACE OF USABLE AREA	102.28 m2
TOTAL OF CONSTRUCTED AREA	118.80 m2

Surface of Communal Area	26.33 m2
--------------------------	----------

TOTAL OF COSTRUCTED AND COMMUNAL AREA	145.13 m2 (1)
---------------------------------------	---------------

Surface of Terrace-Sun Area	96.58 m2 (2)
------------------------------------	---------------------

Private Garden	00.00 m2 (3)
----------------	--------------

TOTAL SURFACE OF APARTAMENT (1+2+3)	241.71 m2
--	------------------



DUNES BEACH

MARBELLA

PROJECT OF 30 APARTMENTS IN CABOPINO
DEVELOPER: DUNES BEACH INVEST S.L.