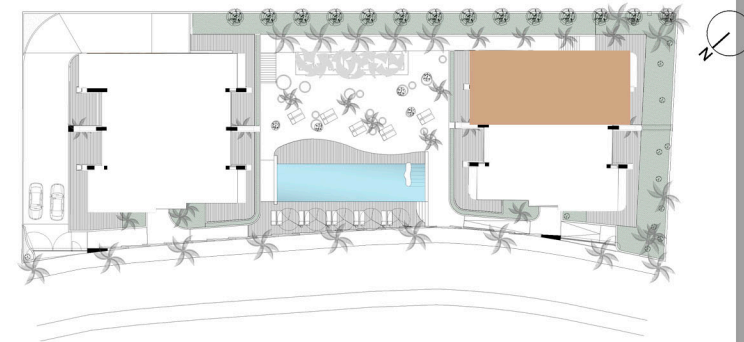




BUILDING B DUPLEX PENTHOUSE B



BUILDING B

DUPLEX
PENTHOUSE
APARTMENT B

LIVING ROOM-KITCHEN	37.98 m2
HALL	5.83 m2
BATHROOM 2	4.52 m2
BEDROOM 1	12.14 m2
IN SUITE BATHROOM 1	4.70 m2
BEDROOM 2	11.45 m2
BEDROOM 3	27.36 m2
IN SUITE BATHROOM 3	9.09 m2

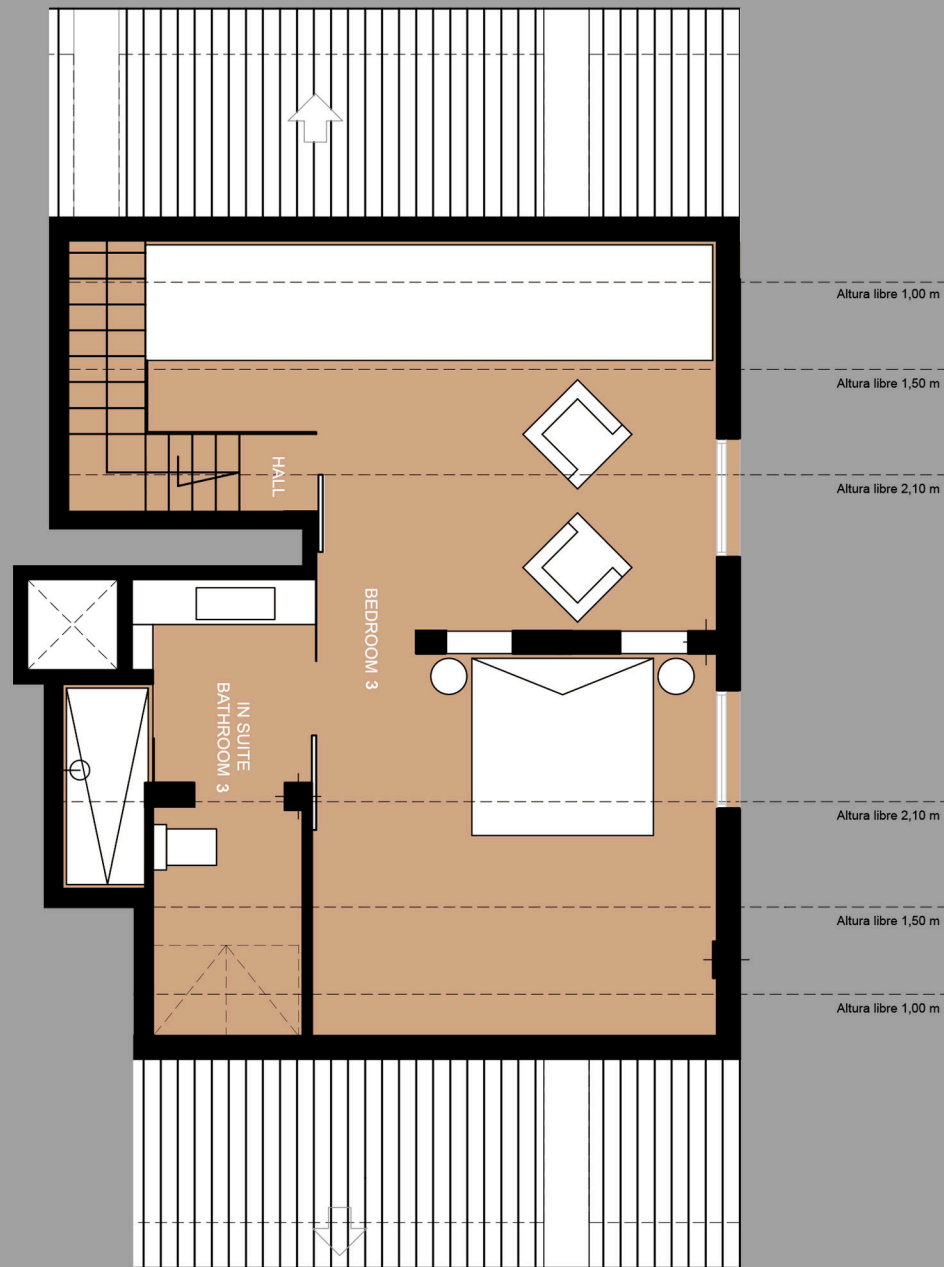
TOTAL OF SURFACE OF USABLE AREA	113.07 m2
TOTAL OF CONSTRUCTED AREA	129.13 m2
Surface of Communal Area	28.62 m2
TOTAL OF COSTRUCTED AND COMMUNAL AREA	157.75 m2 (1)
Surface of Terrace-Sun Area	90.26 m2 (2)
Private Garden	00.00 m2 (3)

TOTAL SURFACE OF APARTAMENT (1+2+3)	248.01 m2
-------------------------------------	-----------

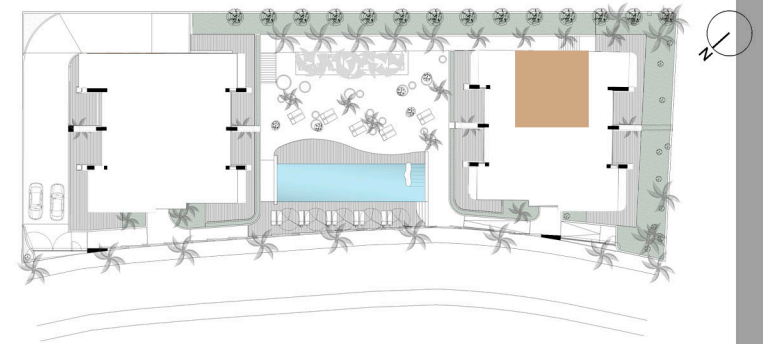


DUNES BEACH
MARBELLA

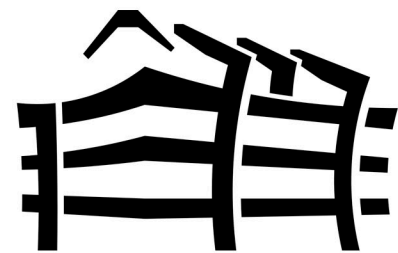
PROJECT OF 30 APARTMENTS IN CABOPINO
DEVELOPER: DUNES BEACH INVEST S.L.



BUILDING B DUPLEX PENTHOUSE B



BUILDING B		DUPLEX PENTHOUSE APARTMENT B	
LIVING ROOM-KITCHEN	37.98 m2		
HALL	5.83 m2		
BATHROOM 2	4.52 m2		
BEDROOM 1	12.14 m2		
IN SUITE BATHROOM 1	4.70 m2		
BEDROOM 2	11.45 m2		
BEDROOM 3	27.36 m2		
IN SUITE BATHROOM 3	9.09 m2		
TOTAL OF SURFACE OF USABLE AREA		113.07 m2	
TOTAL OF CONSTRUCTED AREA		129.13 m2	
Surface of Communal Area		28.62 m2	
TOTAL OF COSTRUCTED AND COMMUNAL AREA		157.75 m2	(1)
Surface of Terrace-Sun Area		90.26 m2	(2)
Private Garden		00.00 m2	(3)
TOTAL SURFACE OF APARTAMENT (1+2+3)		248.01 m2	



DUNES BEACH
MARBELLA

PROJECT OF 30 APARTMENTS IN CABOPINO
DEVELOPER: DUNES BEACH INVEST S.L.