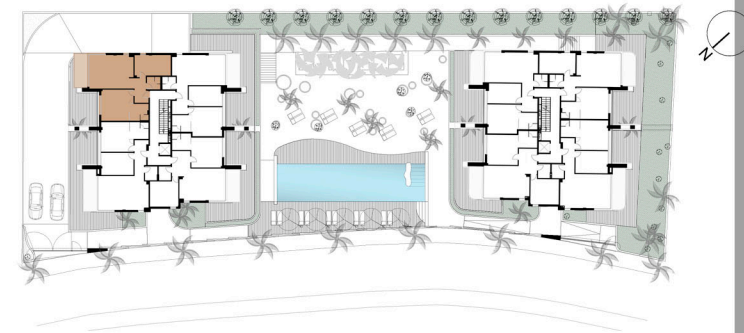




# BUILDING A FIRST FLOOR B



## BUILDING A

FIRST FLOOR  
APARTMENT B

LIVING ROOM-KITCHEN	26.72 m2
HALL	5.70 m2
TOILET	3.09 m2
BEDROOM 1	16.82 m2
IN SUITE BATHROOM 1	5.84 m2
BEDROOM 2	13.75 m2

TOTAL OF SURFACE OF USABLE AREA	71.92 m2
---------------------------------	----------

TOTAL OF CONSTRUCTED AREA	85.32 m2
---------------------------	----------

Surface of Communal Area	19.33 m2
--------------------------	----------

TOTAL OF COSTRUCTED AND COMMUNAL AREA	104.65 m2 (1)
---------------------------------------	---------------

Surface of Terrace-Sun Area	8.39 m2 (2)
-----------------------------	-------------

Private Garden	00.00 m2 (3)
----------------	--------------

TOTAL SURFACE OF APARTAMENT (1+2+3)	113.04 m2
-------------------------------------	-----------



DUNES BEACH  
MARBELLA

PROJECT OF 30 APARTMENTS IN CABOPINO  
DEVELOPER: DUNES BEACH INVEST S.L.